



when reliability is critical™

High Reliability Trackballs

- 1.3", 1.5", 2.0" and 3.0" Diameters
- Redundant Photo detectors
- Formed Teflon® Sealing Ring
- Lifetime Technical Support



Panel Mount Trackballs with Switches

Reliability by Design

CTI's trackballs are designed from the ground up for dependable performance. A formed Teflon® ring floating in a metal collar rejects contaminants and moisture. The ball rides on hardened stainless steel rollers and aerospace quality sealed bearings which produce a smooth and uniform feel. Our redundant photo transistors, and industry first, guarantee a consistent output. The full travel switches provide excellent tactile feedback. They also feature gold contacts for reliability and long life.

Variety without Compromise

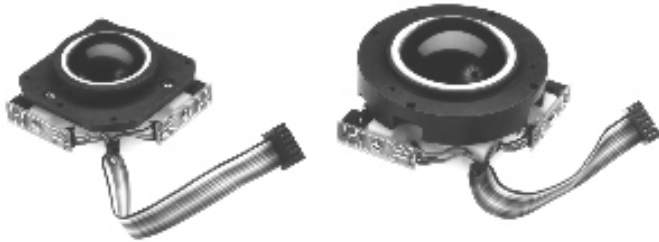
CTI currently offers trackballs in desktop, panel-mount and OEM configurations. Trackball sizes are 1.3", 1.5", 2.0" and 3.0". The popular 2.0" model features a nylon housing for bearing support. Aluminum housings are standard on all other models and optional on the 2.0". Options include electronic interface, protocol, cabling, and switches. All sizes in all configurations come with CTI's commitment to produce a trackball of unequalled reliability and performance.

Trackballs with Unmatched Track Records

Our trackballs are used worldwide in a wide variety of demanding applications. Over the sea, in navigation and radar stations. On the land, in process control and inspection equipment. In the air, in diagnostic terminals. In every application, the trackball was chosen because of its performance. Furthermore, our lifetime technical support guarantees continued proper performance.

Specifications:

<i>MTBF:</i>	Greater than 350,000 hours
<i>Interfaces:</i>	PS/2 Mouse, Serial Mouse, Sun Microsystems, DEC, RS-232, RS-422, TTL, Quadrature
<i>Operating Voltage:</i>	5 Volts DC
<i>Supply Current:</i>	70mA, nominal
<i>Operating Temp:</i>	-25° to 80° C, standard -40° to 80° C, optional
<i>Warranty:</i>	12 months (limited)



OEM Trackball Modules

Teflon® is a registered trademark of DuPont™

110 Old South Ave - Stratford, CT 06615
Tel: (203) 386-9779 - Fax: (203) 378-4986 - www.ctielectronics.com



Desktop Trackball System Model Number: T80X3 Series

- Steel enclosure with textured putty finish
- Switches have 5 million life and gold contacts
- Trackball MTBF exceeds 100,000 hours
- Power: 5 Volts DC @ 60mA
- Output: Programmable RS-232/RS422
Quadrature
Pulse / Direction
Mouse Emulations

OEM Trackball Assemblies

Model Numbers: T4000-T6000 Series

- Available in sizes from 1.3" to 3.0" diameter
- Trackball MTBF exceeds 100,000 hours
- Output: Programmable RS-232/RS422
Quadrature
Pulse / Direction
All Mouse Emulations



Industrial Keyboard Trackball System Model Number: KIT Series

- Steel enclosure with textured putty finish
- Available for Workstation or Rack Mounting
- Output is Port Compatible with most popular computers.

*ALL DIMENSIONS SHOWN WERE ACCURATE AT TIME OF PRINTING. CTI RESERVES THE RIGHT TO CHANGE SPECIFICATIONS AT ANY TIME. PLEASE CONSULT WITH CTI ELECTRONICS FOR CURRENT SPECIFICATION DRAWINGS.

CTI Electronics Corporation - 110 Old South Ave - Stratford, CT 06615
Tel: (203) 386-9779 - Fax: (203) 378-4986 - www.ctielectronics.com