

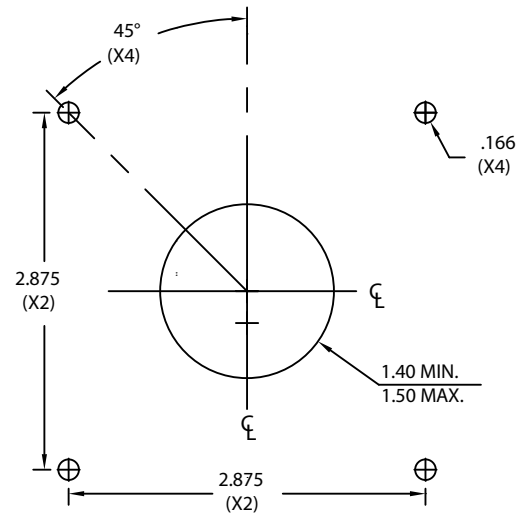
**ORDERING INFORMATION:**

H 1 0 [ ] 0 [ ] - N 3 [ ]

3 N33 KNOB OPTION  
4 N34 KNOB OPTION

Z CONFORMAL COATING OPTION

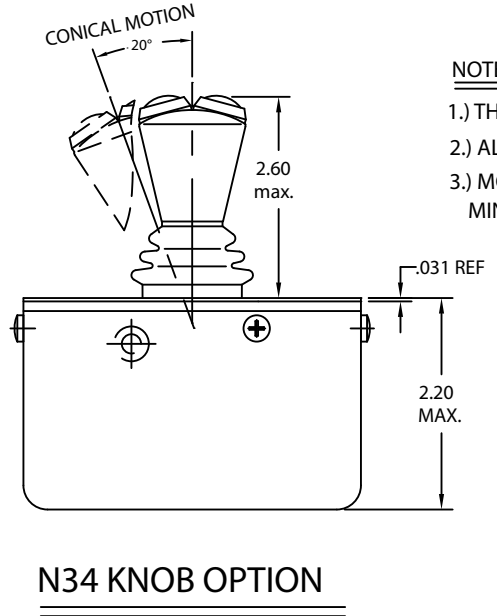
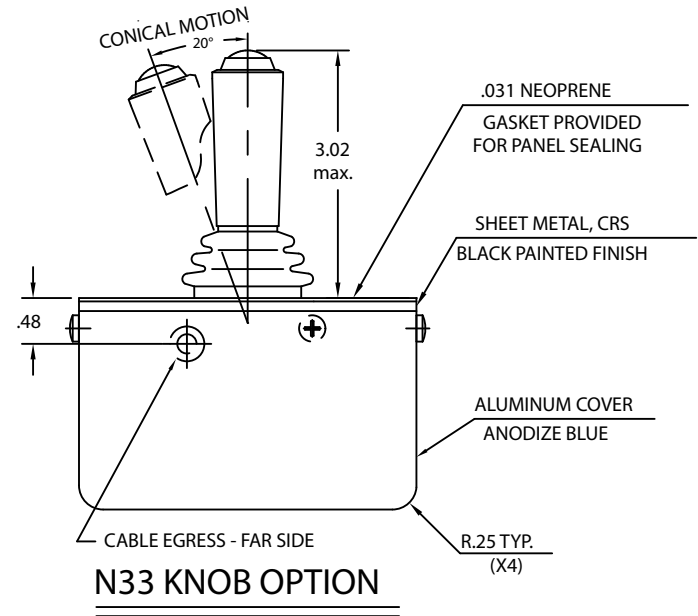
P PS/2 INTERFACE (CABLE LENGTH IS 6.0')  
U USB INTERFACE (CABLE LENGTH IS 9.5')  
9 QUADRATURE (LEGACY) N33 KNOB ONLY.  
CABLE REFERENCE IS D9M107 (CABLE LENGTH IS 6.0')



PANEL MOUNTING DETAIL

**NOTES**

- 1.) THIS IS A LEGACY PRODUCT, REPLACES H10PO-N32
- 2.) ALL DIMENSIONS ARE IN INCHES
- 3.) MOUNTING: USE STAINLESS STEEL SCREWS #6-32 (X4)  
MIN. .25 TO .50 MAX. DEPTH BELOW MOUNTING SURFACE



CTI ELECTRONICS CORPORATION		
WWW.CTIELECTRONICS.COM		
PANEL MOUNT INDUSTRIAL MOUSE		○
NEMA 4 (IP66) MODELS		
H10PO-NX	H10U0-NX	
<b>B 761683</b>		REV. D
APPROVED	SHEET 1 OF 1 DATE 06-13-13	DRAWN BY PSB