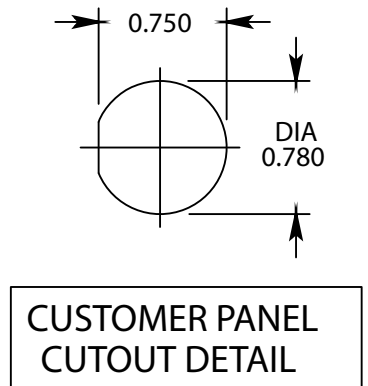


TYPICAL MODELS

M20P9W	[]
M90P9W	[]

REF.
(P9S009 CABLE)

[1] THRU 5 INDICATES "W" CABLE LENGTH DIMENSION IN 1 FOOT INCREMENTS
 BLANK [] INDICATES DEFAULT CABLE LENGTH OF 6 FEET



THESE DRAWINGS AND SPECIFICATIONS ARE THE PROPERTY OF CTI ELECTRONICS CORP. INC., AND ARE ISSUED IN STRICT CONFIDENCE, AND SHALL NOT BE REPRODUCE. OR COPY, OR USED AS THE BASIS FOR THE MANUFACTURE OR SALE OF EQUIPMENT WITHOUT PRIOR WRITTEN PERMISSION

CTI <u>ELECTRONICS CORPORATION</u> 110 OLD SOUTH AVE, STRATFORD, CT 06615 WWW.CTIELECTRONICS.COM		
BULKHEAD CABLE DETAIL PS/2 MOUSE		
761720	SHEET 1 OF 1	REV. B
APPROVED	DATE 08-31-05	DRAWN PSB