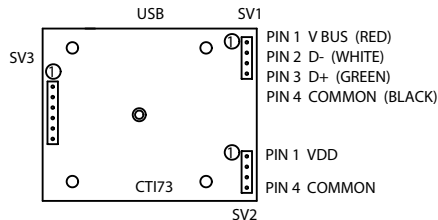


ORBITALMOUSE  
GRAY (BLACK) SILICONE  
(BUTTON STYLE POINTER)

PIN 1 LEFT SWITCH  
PIN 2 MIDDLE SWITCH  
PIN 3 RIGHT SWITCH  
PIN 4 SWITCH COMMON  
PIN 5 LED - (CATHODE)  
PIN 6 LED + (ANODE)

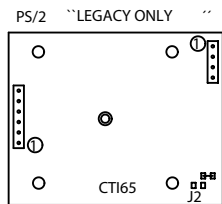
PIN 6 LED + (ANODE)  
PIN 5 LED - (CATHODE)  
PIN 4 SWITCH COMMON  
PIN 3 RIGHT SWITCH  
PIN 2 MIDDLE SWITCH  
PIN 1 LEFT SWITCH

THK. PCB



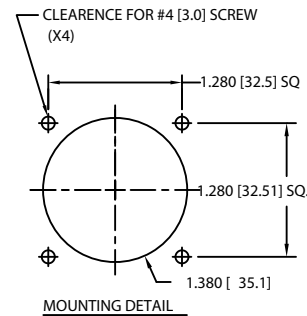
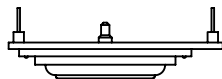
PIN 1 V BUS (RED)  
PIN 2 D- (WHITE)  
PIN 3 D+ (GREEN)  
PIN 4 COMMON (BLACK)

PIN 1 VDD  
PIN 4 COMMON

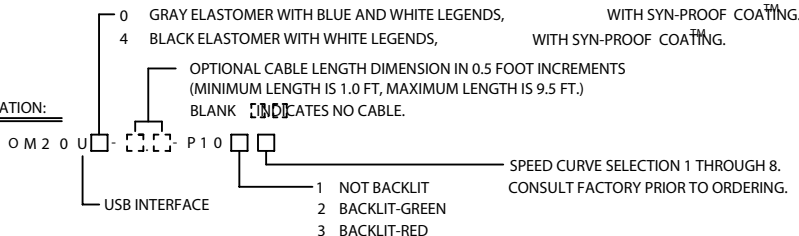


PIN 1 CLOCK (YELLOW)  
PIN 2 DATA (BLACK)  
PIN 3 +5V (RED)  
PIN 4 COMMON (GREEN)

J1 ENABLES LEFT SWITCH/LED  
LATCHING OPTION



ORDERING INFORMATION:



SPECIFICATIONS:

TEMPERATURE RANGE: -40°C TO +80°C  
SEALING RATING: NEMA 4 (IP66), PCB HAS CONFORMAL COATING  
SHOCK: 50G 11 MSEC. PER MIL-STD-810  
WEIGHT: ASSEMBLY, LESS CABLE, APPROX. 0.6 OZ. (18 GRAMS)  
STANDARDS: CE, ROHS AND FCC CLASS B COMPLIANT  
POWER: 10mA @ 5V TYPICAL NON-BACKLIT  
PATENT: 7,499,032

NOTES:

- ALL KEY SWITCHES HAVE HARD GOLD PLATED CONTACTS, RATED AT 10 MILLION ACTIVATIONS.
- OUTPUT CONNECTOR HAS GOLD PLATED .025 SQUARE PINS ON .1" CENTERS
- THIS PRODUCT CONTAINS STATIC SENSITIVE COMPONENTS,

DIMENSIONS ARE IN INCHES [MILLIMETERS]

<b>CTI ELECTRONICS CORPORATION</b>	
WWW.CTIELECTRONICS.COM	
NEMA 4 (IP66) OEM INDUSTRIAL ORBITALMOUSE (BUTTON STYLE POINTER) OM2000 SERIES	
<b>761763</b>	
APPROVED	DATE 08-10-16 DRAWN BY PSB
SHEET 1 OF 1	
COPYRIGHT 2016 CTI ELECTRONICS CORP. SPECIFICATIONS SUBJECT TO CHANGE WITHOUT NOTICE	