

NEMA 4/4X (IP66)
KI07000 Series
 Medical Keyboards
 Button Style Mouse
 OrbitalMouse® Pointer



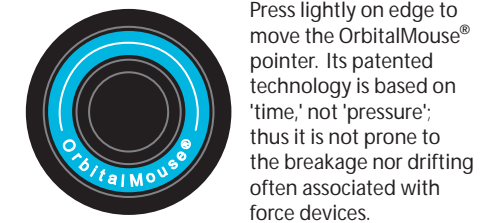
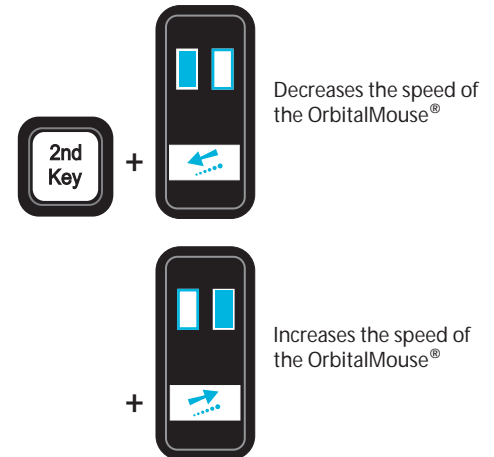
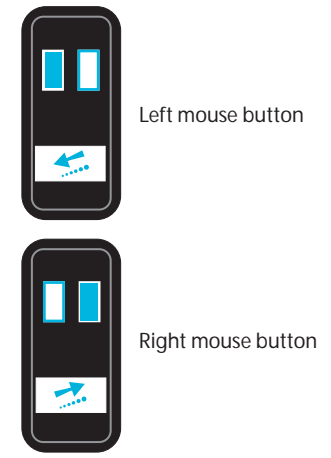
front: OEM (4.456" x 11.625" x 0.53")
 Reference B761795.pdf

back: Plug-N-Play (6.13" x 12.33" x 1.32")
 Reference B761796.pdf

U.S. Patent No. 7,499,032
 U.S. Patents Pending 12/344368
 Cage Code No. 0K9X9

- Brings up the application help menu
- Renames a selected item
- Displays the Find: All Files dialog box
- Opens the Shut Down dialog box
- Refreshes the contents of a dialog box or window
- Moves the cursor in the structure of browser window; goes to the next pane or frame
- Performs a Spelling and Grammar check
- Extends the current selection; brings up start up menu while booting system
- Updates selected fields
- Displays the Start menu
- Prevents movement of the left and right mouse buttons

- Returns to beginning of document or current line
- Returns to end of document or current line
- Scrolls page up without moving caret (blinking vertical line)
- Scrolls page down without moving caret
- Activates the menu bar
- Enters full screen mode; otherwise known as 'KIOSK' mode
- Chooses 'Save As' command
- Switches between 'overtyping' and 'insert' text-entering modes
- Locks all scrolling techniques
- Captures current screen image and saves it to the computer's clipboard
- Pauses the loading of certain programs
- Terminates an established modem connection
- Used as a substitution for the right mouse button to launch context menus



Disclaimer: These functions may or may not work depending on application.

© 2010 CTI Electronics Corporation

Proudly manufactured in the U.S.A.
 110 Old South Avenue
 Stratford, CT 06615
 T: 203-386-9779 • F: 203-378-4986
 www.ctielectronics.com